

Labor Force Estimates

\* 2005 Data for the WDA are not comparable to previous years

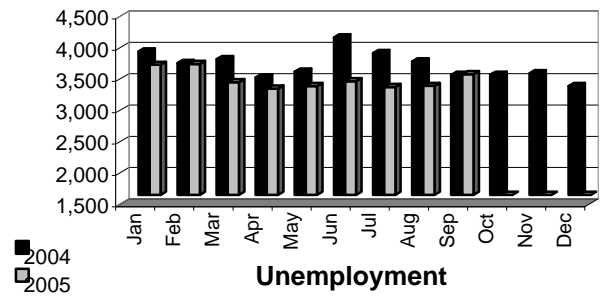
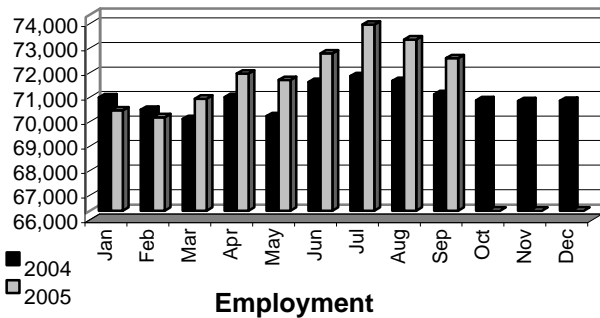
Civilian Labor Force Estimates (non-seasonally adjusted)

	Concho Valley WDA				Texas			
	CLF	Empl	Unempl	Rate	CLF	Empl	Unempl	Rate
Sep-05	75,650	72,222	3,428	4.5	11,247,719	10,603,135	644,584	5.7
Aug-05	76,226	72,983	3,243	4.3	11,259,471	10,679,422	580,049	5.2
*Sep-04	74,169	70,748	3,421	4.6	11,041,834	10,403,750	638,084	5.8

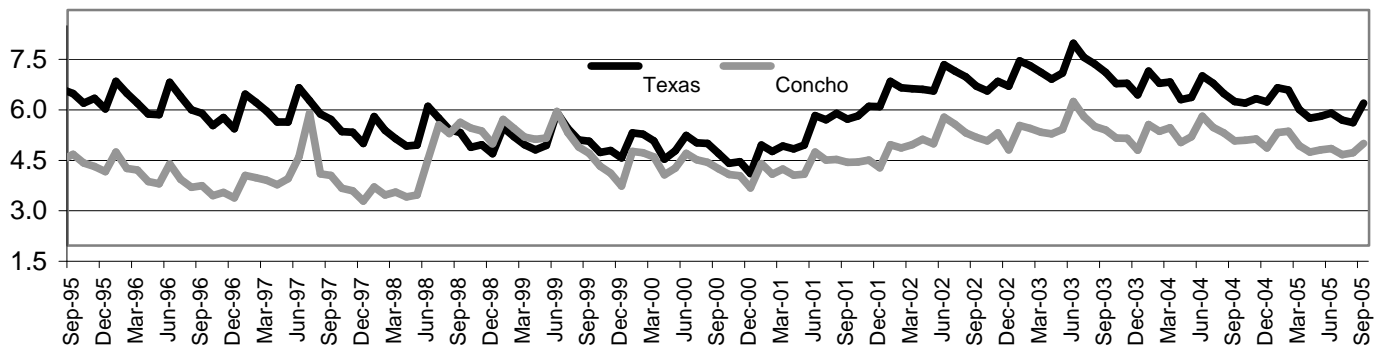
Concho Valley WDA

The civilian labor force in the Concho Valley WDA decreased slightly in September to 75,650 people. The labor force is comprised of 72,222 workers and 3,428 job seekers. Concho Valley WDA's unemployment rate increased two-tenths of a percentage point in September to 4.5 percent. The rate stood at 4.6 percent a year ago. Employment in the WDA edged downward in September by 761 workers, while the number of unemployed increased slightly by 5.7 percent, or 185 people. All twelve counties experienced unemployment increases over the month with Tom Green having the majority, with 141 more job seekers. The number of continued claims declined slightly over the month to 303.

Concho Valley WDA

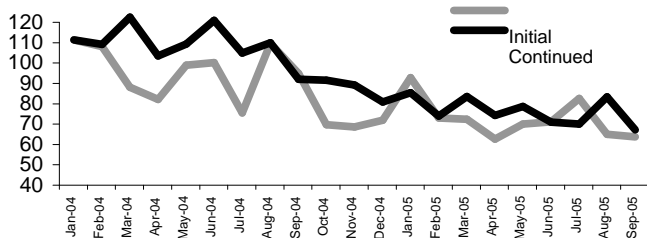


Historical Unemployment Rates



Unemployment Claims Data

Indexed Growth Rates for Claims  
(Base Period = January 2004)



Total Claims

	Sep-05	Aug-05	*Sep-04	OTY Change
Initial	221	226	352	-131
Continued	1,442	1,857	2,082	-640

Continued Claims for the Week of the 12th

Continued	303	331	373	-70
-----------	-----	-----	-----	-----

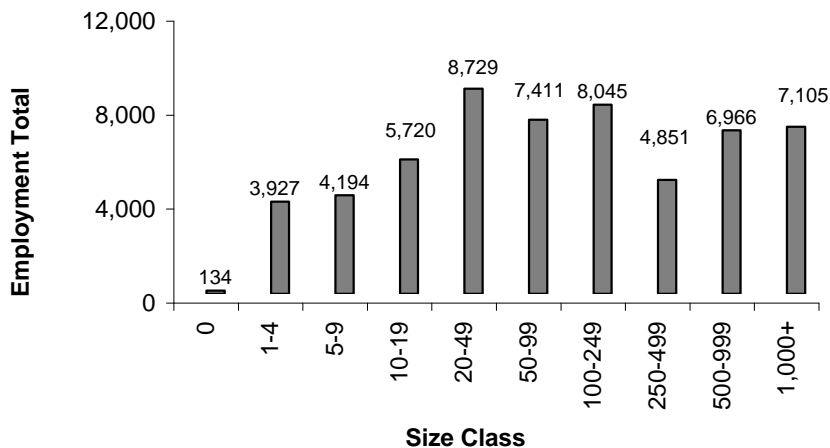
Occupational Information

Concho Valley WDA's Top Ten Highest Paid Occupations with a Bachelor's Degree

Occupation	Avg Ann Wage	Occupation	Avg Ann Wage
Petroleum Engineers	\$114,973	Physician Assistants	\$78,845
Mechanical Engineers	\$84,338	Airline Pilots, Copilots, and Flight Engineers	\$75,844
Health and Safety Engineers, Except Mining Safety Engineers and Inspectors	\$80,057	Electronics Engineers, Except Computer	\$75,541
Zoologists and Wildlife Biologists	\$80,057	Materials Engineers	\$75,397
Personal Financial Advisors	\$79,019	Writers and Authors	\$74,691

Industrial Employment

Concho Valley WDA Size Class Employment Composition  
1st Quarter 2005



Top 20 Private Employers for the WDA  
1st Quarter 2005

- ACME ENERGY SERVICES INC
- BAPTIST MEMORIALS HEALTH CARE SERVICES
- CELLULAR ONE
- CONCEPTS OF CARE
- ETHICON INC
- GTE SOUTHWEST INC
- HIRSCHFELD STEEL CO INC
- LONE STAR BEEF PROCESSORS LLC
- NURSES UNLIMITED INC
- OUTREACH HEALTH COMMUNITY CARE SERVICES
- PATTERSON - UTI DRILLING SOUTH LP LLP
- REECE ALBERT INC
- SAN ANGELO MEDICAL CENTER LLC
- SAN ANGELO PACKING COMPANY INC
- SHANNON CLINIC
- SHANNON MEDICAL CENTER
- SITEL CORPORATION
- TOWN & COUNTRY FOOD STORES INC
- WAL-MART ASSOCIATES INC
- WEST TEXAS MEDICAL ASSOCIATES

Concho Valley WDA Employment by Size Class  
1st Quarter 2005

Size Class	Employment in Size Class	Quarterly Employment	Quarterly UI Accounts
0	0	134	239
1	1-4	3,927	1,829
2	5-9	4,194	647
3	10-19	5,720	434
4	20-49	8,729	288
5	50-99	7,411	110
6	100-249	8,045	55
7	250-499	4,851	15
8	500-999	6,966	9
9	1,000+	7,105	5
<b>Total</b>		<b>57,082</b>	<b>3,631</b>

Average Weekly Wage	Concho	Change	Texas	Change
1st QTR 2005	\$526.91	-\$18.29	\$759.52	\$19.62
2004 Average	\$545.20	\$30.21	\$739.90	\$29.17
2003 Average	\$515.00		\$710.73	